

IRVING

# Schoolyard

Putting the yard back in schoolyard

PROJECT



## A new idea has taken root

New environmentally friendly construction materials mean the urban schoolyard doesn't have to be reduced to pavement and wood chips. Coupled with new renewable energy and accessibility standards, these advances mean our children can enjoy a safe and healthy play environment that also enhances learning.

With your help, the *Irving Schoolyard Project* is planning to reinvent Irving's outdoor space by removing blacktop, restoring native plantings, creating outdoor gathering spaces for teaching and learning, and providing safe and accessible recreational areas.

### Something for everyone

#### Community –

- New neighborhood greenspace
- New gateway to Oak Park
- Long term savings to D 97
- Aesthetic improvement
- Healthier environment

#### Children –

- Safe play surfaces
- Accessible to all children
- New playground
- All season outdoor sports
- Shaded space
- Space for hands-on education

#### School staff –

- Easier to monitor for safety
- New ways & places to teach
- More physical education opportunities



### Get involved

The *Irving Schoolyard Project* is a community-based effort led by the Irving PTO. We need your help to make this idea a reality. Here's how:

**Learn more** by visiting [www.irvingschoolyard.com](http://www.irvingschoolyard.com)

**Make a donation** or fill out a pledge form

**Join a committee** and lend your skills to this project

**Sign up** to receive email updates

**Demonstrate your support** by attending upcoming events

**Host a meeting** to tell your neighbors about the project

*Above: photo by Frank Pinc*

*For over 50 years, 80,000 square feet — roughly half— of Irving School's property has been paved in asphalt. The Irving Schoolyard Project wants to change course with a holistic effort to turn Irving outdoors into a school and community asset...bringing curriculum, environmental and community improvements to Southeast Oak Park.*

# Conceptual site plan

*Irving Schoolyard Project is a green solution to a blacktop problem! Take a look at the major components that represent the preliminary design planning phase.*

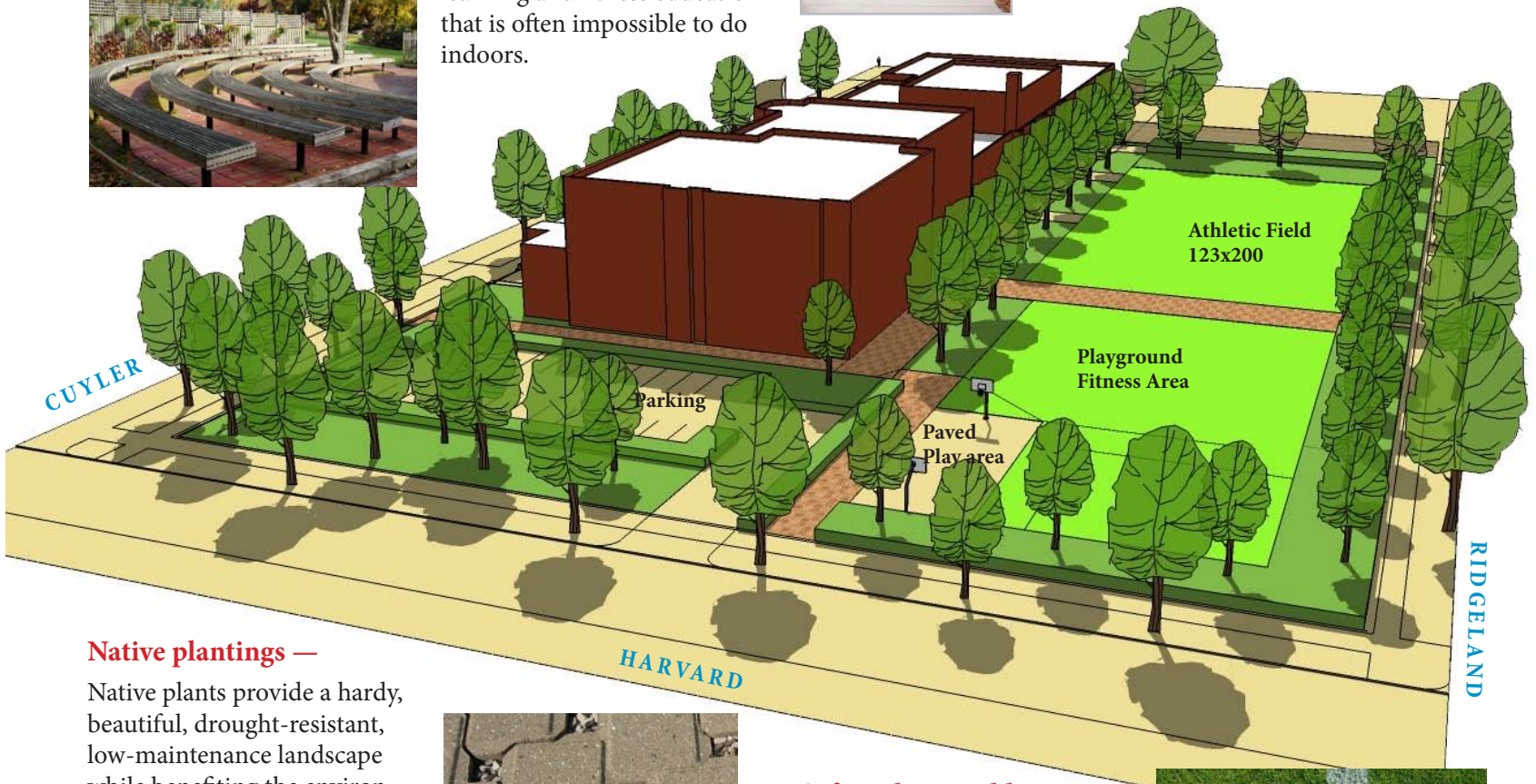
## New curriculum opportunities —

Outdoor classrooms, community gardens, and fitness areas provide an opportunity for demonstrations, interactive science activities, horticultural learning and fitness education that is often impossible to do indoors.



## Walking path —

Walkable neighborhoods offer benefits to our health, the environment, and our communities.



## Native plantings —

Native plants provide a hardy, beautiful, drought-resistant, low-maintenance landscape while benefiting the environment. Native plants reduce the need for fertilizers, pesticides, water and lawn maintenance equipment.



## Water management —

Promote rainfall infiltration by replacing the existing blacktop and parking areas with more permeable surfaces and diverting downspouts. This will allow for the creation of bioswales—small wetlands that avoid water runoff and create a nature zone for kids.



## Safe and accessible playground —

A well designed and accessible playground provides challenging and fun activities for everyone while also providing for the safety of the children using the playground.



## Multi-use athletic field —

By replacing part of the blacktop with an alternative surface such as synthetic turf, a field at Irving could support safe, environmentally friendly activities year-round for both students and the community.



## Fitness area —

A community fitness circuit provides a variety of outdoor stations including sit-ups, bar dips, pull-ups and other activities.